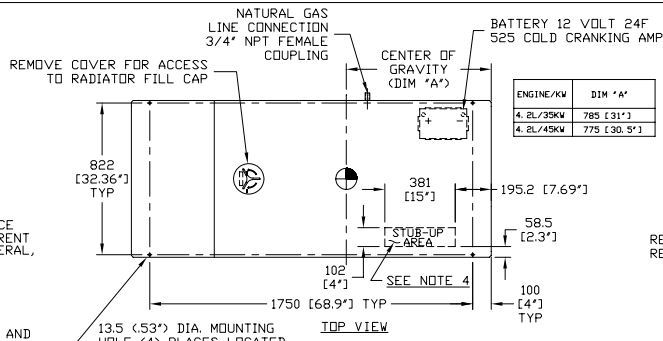
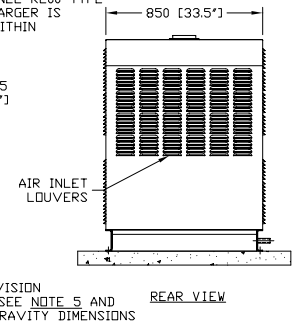
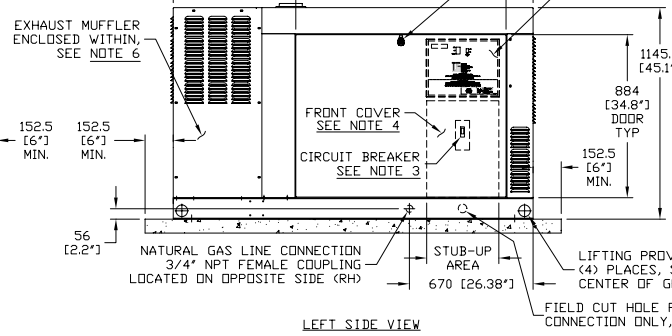
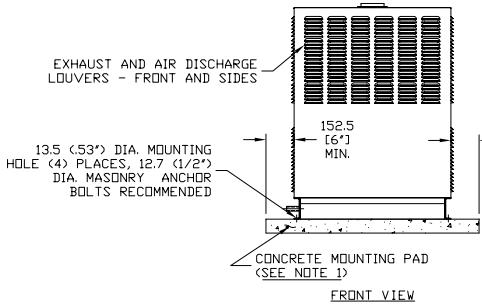


0G5868

WEIGHT DATA			
ENGINE/KW	WEIGHT (GENSET ONLY) KG (LBS)	WEIGHT (WOODEN SHIPPING CRATE/ASKID) KG (LBS)	SHIPPING WEIGHT (SKID AND GENSET) KG (LBS)
4.2L/35KW	601 (1325)	44 (98)	645 (1423)
4.2L/45KW	617 (1360)	44 (98)	661 (1458)

**NOTES:**

- MINIMUM RECOMMENDED CONCRETE PAD SIZE: 1155 (45.5') WIDE X 2255 (88.8') LONG. REFERENCE INSTALLATION GUIDE SUPPLIED WITH UNIT FOR CONCRETE PAD GUIDELINES.
- ALLOW SUFFICIENT ROOM ON ALL SIDES OF THE GENERATOR FOR MAINTENANCE AND SERVICING. THIS UNIT MUST BE INSTALLED IN ACCORDANCE WITH CURRENT APPLICABLE NFPA 37 AND NFPA 70 STANDARDS AS WELL AS ANY OTHER FEDERAL, STATE AND LOCAL CODES FOR MINIMUM DISTANCES FROM OTHER STRUCTURES.
- CIRCUIT BREAKER INFORMATION: SEE SPECIFICATION SHEET WITHIN OWNERS MANUAL.
- INSIDE STUB-UP AREA FOR AC LOAD LEAD CONDUIT CONNECTION, NEUTRAL CONNECTION, BATTERY CHARGER 120 VOLT AC (5 AMP MAX.) CONNECTION, AND ACCESS TO TRANSFER SWITCH CONTROL WIRES. REMOVE FRONT COVER FOR ACCESS.
- FIELD CUT HOLE IS ONLY REQUIRED FOR MOUNTING OF GENERATOR ON AN EXISTING PAD.
- REFERENCE OWNERS MANUAL FOR LIFTING WARNINGS.
- REMOVE EITHER LEFT OR RIGHT HAND SIDE PANEL TO ACCESS EXHAUST MUFFLER AND FAN BELT.



SERVICE ITEM ACCESSIBILITY CHART	
SERVICE ITEM	
DIL FILL CAP	THRU LEFT DOOR
DIL DIP STICK	THRU LEFT DOOR
DIL FILTER	THRU LEFT DOOR
DIL DRAIN HOSE	THRU RIGHT DOOR
RADIATOR DRAIN HOSE	THRU RIGHT DOOR
AIR CLEANER ELEMENT	THRU RIGHT DOOR
SPARK PLUGS	BOTH DOORS
MUFFLER	SEE NOTE 6
FAN BELT	SEE NOTE 6
BATTERY	THRU RIGHT DOOR

REFERENCE OWNERS MANUAL FOR PERIODIC REPLACEMENT PART LISTINGS

GENERAC POWER SYSTEMS OWNS THE COPYRIGHT OF THIS DRAWING WHICH IS SUPPLIED IN CONFIDENCE AND MUST NOT BE USED FOR ANY PURPOSE OTHER THAN FOR WHICH IT IS SUPPLIED WITHOUT THE EXPRESS WRITTEN CONSENT OF GENERAC POWER SYSTEMS.  
© GENERAC POWER SYSTEMS 2001

INSTALLATION DRAWING	
4.2L 35KW & 45KW	
SCALE	1 = 20
DWG NO.	0G5868

<b>GENERAC POWER SYSTEMS</b> <b>Waukesha</b> P.O. BOX 8 WAUKESHA, WIS. 53187	
FILE NAME	0G5868-A.DWG
SIZE	B
SCALE	1 = 20
FIRST USE	QT SERIES
REV	A

INSTALLATION DRAWING